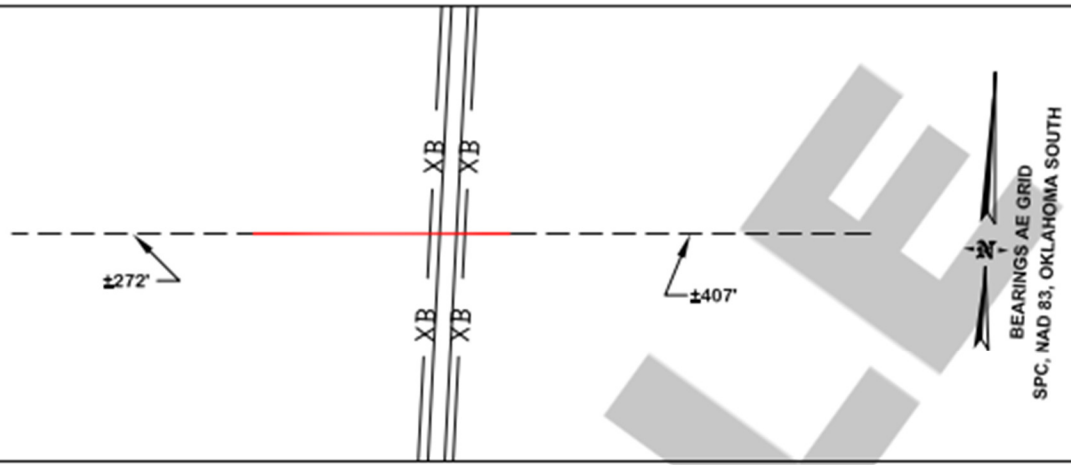
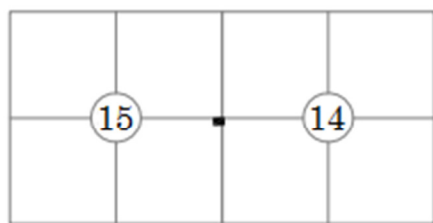


**SECTION 15 INTO 14
T11N-R4W, I.M.
TUTTLE COUNTY, OKLAHOMA**

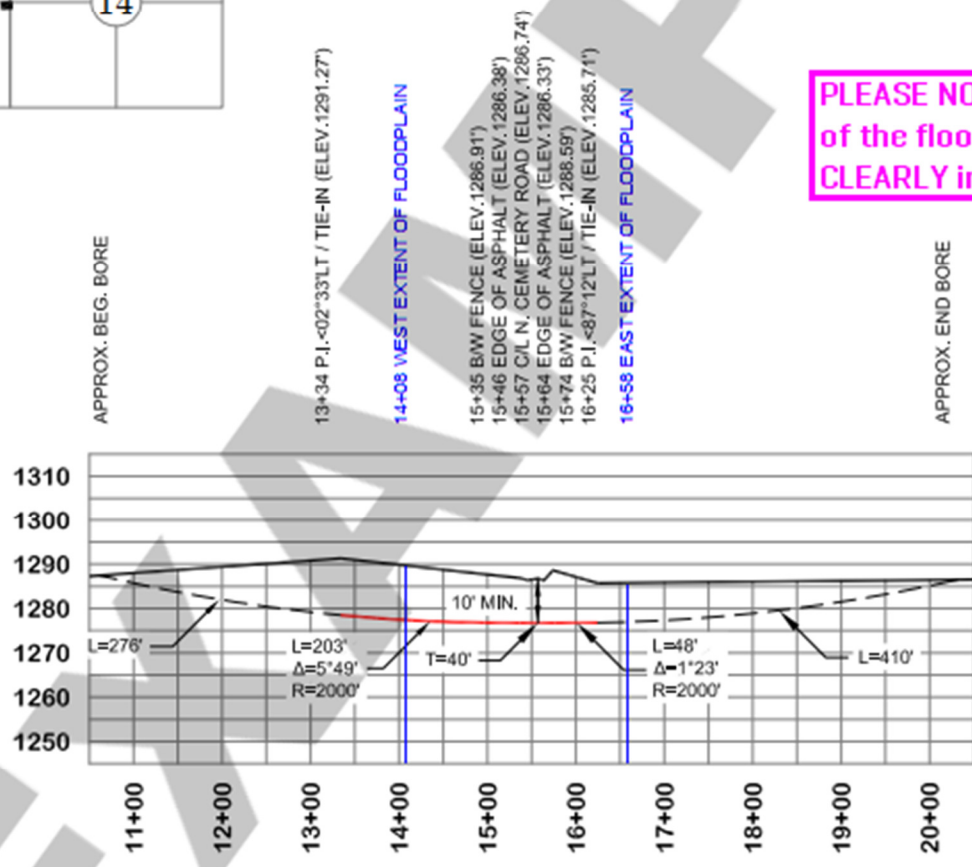


PLAN
HORIZONTAL SCALE: 1" = 225'



PROFILE
HORIZONTAL SCALE: 1" = 225'
VERTICAL SCALE: 1" = 45'

PLEASE NOTE: the extent of the floodplain must be CLEARLY indicated



APPROX. BEG. BORE

APPROX. END BORE

ENTRY TO EXIT = 977'
TIE-IN TO TIE-IN = 291'

CARRIER PIPE-DATA

CONTENTS	NAT. GAS
DIAMETER (O.D.)	20.00"
MATERIAL	X-52 / X-60
WALL THICKNESS	.312"
COATING	FBE / ARO
WKG. PRESSURE	N/A
M.A.O.P.	N/A
INSTALLATION	BORE

PROFILE - JONES ROAD SOUTH TRUNK LINE SECTION 400 SECTION 15 INTO 14 T11N-R4W, I.M. TUTTLE COUNTY, OKLAHOMA 20" LINE			
DWG No.: 17-001		DRAWN BY: KPD	
SCALE: 1" = 225'		SURVEYED BY: WW	
DATE: 01/03/17		CHECKED BY: SGD	
REV.	DESCRIPTION	DWN.	DATE
01	NAME & PIPE SIZE CHANGE	KPD	01/13/17



(ENGINEER'S SEAL HERE)

ENGINEER'S SEAL IS REQUIRED

THIS PLAT OF SURVEY DOES NOT MEET THE MINIMUM REQUIREMENTS FOR THE PRACTICE OF LAND SURVEYING AS OUTLINED BY THE OKLAHOMA STATE BOARD OF LICENSURE FOR PROFESSIONAL ENGINEERS AND LAND SURVEYORS AND IS INTENDED FOR CONSTRUCTION PURPOSES ONLY.